








**Worklist: 2155**

<u>LAB_CASE</u>	<u>ITEM</u>	<u>TASK_ID</u>	<u>DESCRIPTION</u>	
C2018-0083	2	106457	AM 3 Urine Carboxy-THC	
C2018-0091	5	106458	AM 3 Urine Carboxy-THC	
M2018-0339	3	106459	AM 3 Urine Carboxy-THC	
P2018-0219	1	106460	AM 3 Urine Carboxy-THC	
P2018-0220	1	106461	AM 3 Urine Carboxy-THC	
P2018-0250	1	106462	AM 3 Urine Carboxy-THC	
P2018-0335	1	106463	AM 3 Urine Carboxy-THC	

Instrument stopped running about half way through the run. The run was restarted the following morning.

Data Path : C:\My Files\cshrum\Desktop\Consolidated\Data\URINE\am 3 worklist 2155\  
 Data File : THC-Neg Ctrl.D  
 Acq On : 01 Feb 2018 15:02  
 Operator : ISP\datastor  
 Sample : Negative Control  
 Misc : Lot # POC112116; AM #3 Worklist 2155  
 ALS Vial : 76 Sample Multiplier: 1

Integration Parameters: events.e  
 Integrator: ChemStation

Method : C:\gcms\1\methods\TOX.M  
 Title :

Signal : EIC Ion 371.00 (370.70 to 371.70): THC-Neg Ctrl.D\data.ms

peak #	R.T. min	first scan	max scan	last scan	PK TY	peak height	corr. area	corr. % max.	% of total
1	4.720	38	47	56	BV	125	1423	28.95%	10.809%
2	5.982	477	486	500	VV	118	2137	43.48%	16.234%
3	6.278	569	588	602	PV	190	4250	86.49%	32.292%
4	6.348	602	613	615	PV	32	438	8.92%	3.329%
5	6.652	687	718	748	BV	152	4914	100.00%	37.336%

Sum of corrected areas: 13162

Signal : EIC Ion 473.00 (472.70 to 473.70): THC-Neg Ctrl.D\data.ms

peak #	R.T. min	first scan	max scan	last scan	PK TY	peak height	corr. area	corr. % max.	% of total
No peaks were detected using the method integration parameters!									

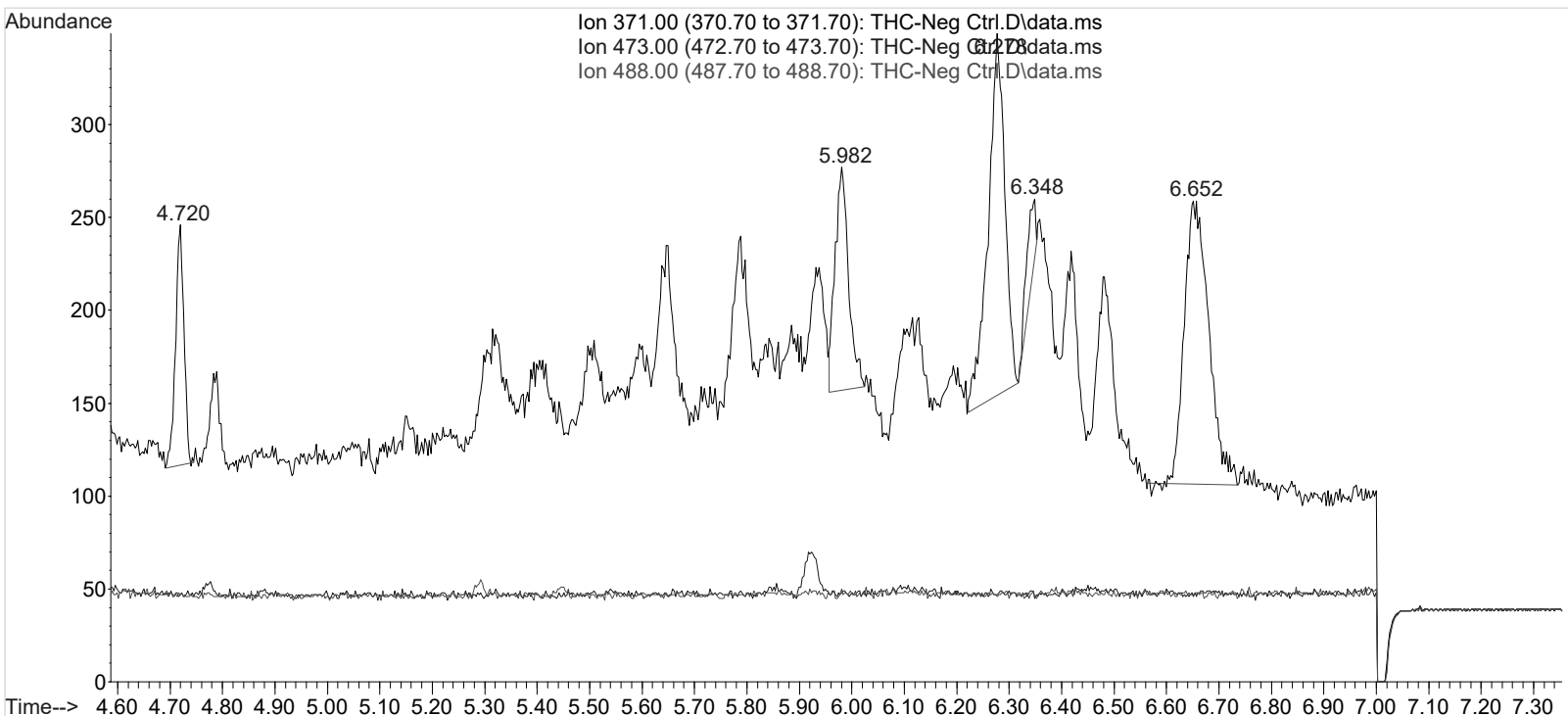
No peaks were detected using the method integration parameters!

Signal : EIC Ion 488.00 (487.70 to 488.70): THC-Neg Ctrl.D\data.ms

peak #	R.T. min	first scan	max scan	last scan	PK TY	peak height	corr. area	corr. % max.	% of total
No peaks were detected using the method integration parameters!									

No peaks were detected using the method integration parameters!

TOX.M Fri Feb 02 08:13:48 2018



c9

Area Percent Report

Data Path : C:\My Files\cshrum\Desktop\Consolidated\Data\URINE\am 3 worklist 2155\  
 Data File : THC-PC1.D  
 Acq On : 01 Feb 2018 15:14  
 Operator : ISP\datastor  
 Sample : Spiked Positive c-THC Control  
 Misc : c-THC lot # 0497429 in Negative Lot # POC112116; Worklist 2155  
 ALS Vial : 77 Sample Multiplier: 1

Integration Parameters: events.e  
 Integrator: ChemStation

Method : C:\gcms\1\methods\TOX.M  
 Title :

Signal : EIC Ion 371.00 (370.70 to 371.70): THC-PC1.D\data.ms

peak #	R.T. min	first scan	max scan	last scan	PK TY	peak height	corr. area	corr. % max.	% of total
1	4.721	34	48	60	BB	128	1575	9.53%	5.354%
2	5.369	262	272	303	VV	1059	16521	100.00%	56.176%
3	6.279	568	589	601	PV	180	3897	23.59%	13.251%
4	6.344	601	611	628	VV	92	2313	14.00%	7.864%
5	6.656	700	720	748	BV	163	5104	30.90%	17.356%

Sum of corrected areas: 29409

Signal : EIC Ion 473.00 (472.70 to 473.70): THC-PC1.D\data.ms

peak #	R.T. min	first scan	max scan	last scan	PK TY	peak height	corr. area	corr. % max.	% of total
1	5.370	260	273	285	BB	381	5391	100.00%	100.000%

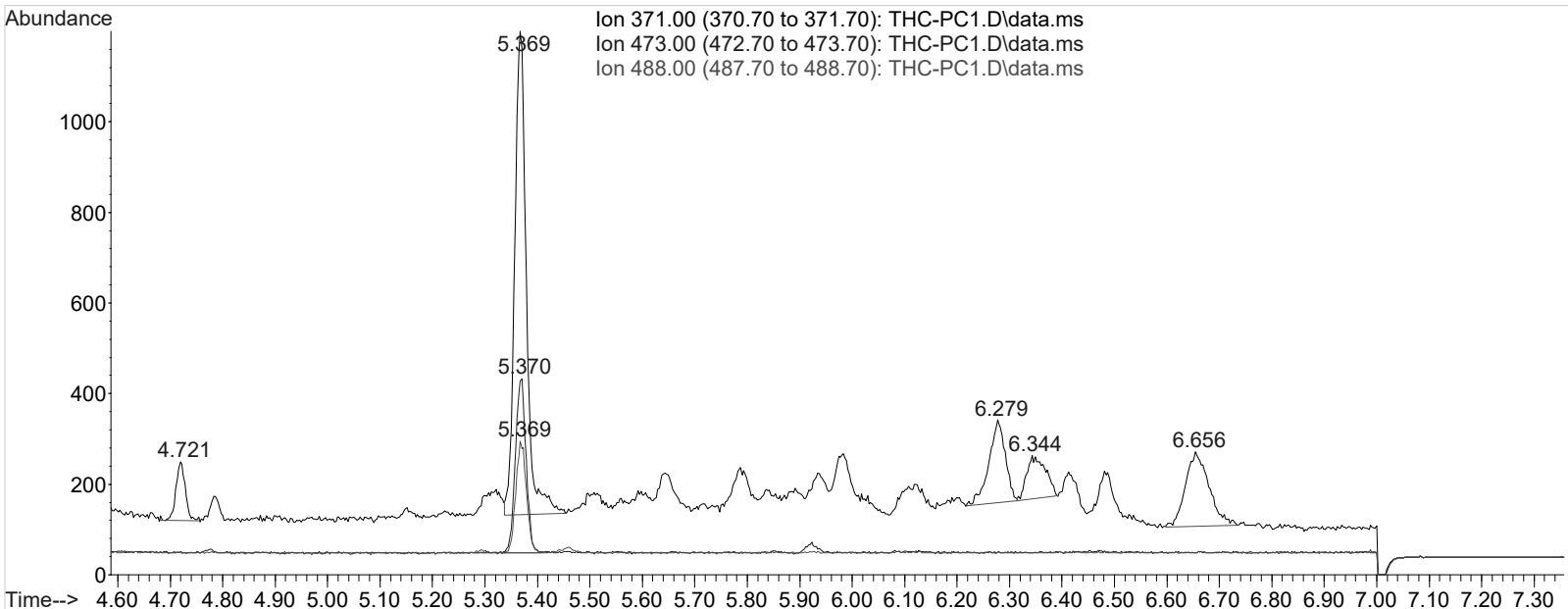
Sum of corrected areas: 5391

Signal : EIC Ion 488.00 (487.70 to 488.70): THC-PC1.D\data.ms

peak #	R.T. min	first scan	max scan	last scan	PK TY	peak height	corr. area	corr. % max.	% of total
1	5.369	241	273	290	BB	241	3507	100.00%	100.000%

Sum of corrected areas: 3507

TOX.M Fri Feb 02 07:15:41 2018



Data Path : C:\My Files\cshrum\Desktop\Consolidated\Data\URINE\am 3 worklist 2155\  
Data File : THC-PC2.D  
Acq On : 02 Feb 2018 10:22  
Operator : ISP\datastor  
Sample : Spiked Positive c-THC Control  
Misc : c-THC lot # 0497429 in Negative Lot # POC112116; Worklist 2155  
ALS Vial : 77 Sample Multiplier: 1

Integration Parameters: events.e  
Integrator: ChemStation

Method : C:\gcms\1\methods\TOX.M  
Title :

Signal : EIC Ion 371.00 (370.70 to 371.70): THC-PC2.D\data.ms

peak #	R.T. min	first scan	max scan	last scan	PK TY	peak height	corr. area	corr. % max.	% of total
1	4.719	38	47	59	PV	185	2163	8.38%	4.367%
2	5.366	261	272	308	VV	1725	25815	100.00%	52.135%
3	5.978	476	484	502	VV	128	2312	8.96%	4.670%
4	6.275	567	587	600	VV	236	5918	22.93%	11.952%
5	6.348	600	613	627	VV	158	4885	18.92%	9.866%
6	6.480	647	659	687	VV	130	3048	11.81%	6.156%
7	6.653	687	719	739	PV	176	5375	20.82%	10.854%

Sum of corrected areas: 49516  
Signal : EIC Ion 473.00 (472.70 to 473.70): THC-PC2.D\data.ms

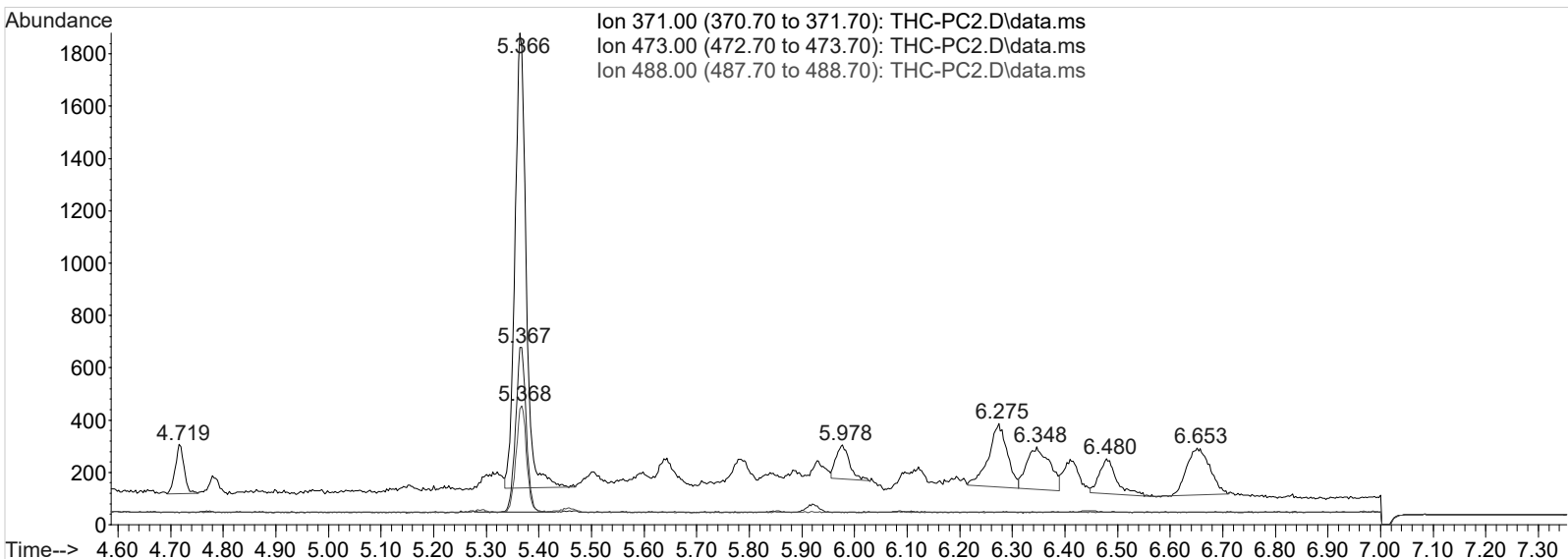
peak #	R.T. min	first scan	max scan	last scan	PK TY	peak height	corr. area	corr. % max.	% of total
1	5.367	261	272	294	BB	630	8789	100.00%	100.000%

Sum of corrected areas: 8789  
Signal : EIC Ion 488.00 (487.70 to 488.70): THC-PC2.D\data.ms

peak #	R.T. min	first scan	max scan	last scan	PK TY	peak height	corr. area	corr. % max.	% of total
1	5.368	241	272	286	BB	403	5654	100.00%	100.000%

Sum of corrected areas: 5654

TOX.M Fri Feb 02 11:51:49 2018



Data Path : C:\My Files\cshrum\Desktop\Consolidated\Data\URINE\am 3 worklist 2155\  
 Data File : THC-C3.D  
 Acq On : 01 Feb 2018 15:36  
 Operator : ISP\datastor  
 Sample : Biorad C3 Control  
 Misc : C3 Lot # 68440; Worklist 2155  
 ALS Vial : 78 Sample Multiplier: 1

Integration Parameters: events.e  
 Integrator: ChemStation

Method : C:\gcms\1\methods\TOX.M  
 Title :

Signal : EIC Ion 371.00 (370.70 to 371.70): THC-C3.D\data.ms

peak #	R.T. min	first scan	max scan	last scan	PK TY	peak height	corr. area	corr. % max.	% of total
1	4.721	33	47	59	PV	820	10054	49.41%	8.787%
2	4.786	59	70	83	VV	260	3328	16.35%	2.909%
3	5.317	234	255	262	BV 2	159	3734	18.35%	3.264%
4	5.368	262	272	287	VV	1274	20348	100.00%	17.784%
5	5.506	305	320	330	VV	114	2664	13.09%	2.328%
6	5.642	343	368	388	VV 2	213	7826	38.46%	6.840%
7	5.788	405	418	430	VV	200	4351	21.38%	3.803%
8	5.936	460	469	477	VV 2	153	2778	13.65%	2.428%
9	5.981	477	485	496	VV	269	4441	21.83%	3.882%
10	6.124	515	535	548	BV	165	5395	26.51%	4.716%
11	6.279	568	589	602	VV	507	14547	71.49%	12.714%
12	6.350	602	613	629	VV	356	11480	56.42%	10.034%
13	6.418	629	637	648	VV	286	5588	27.46%	4.884%
14	6.483	648	659	686	VV	269	6565	32.26%	5.738%
15	6.658	686	720	745	PV	371	11317	55.61%	9.891%

Sum of corrected areas: 114416  
 Signal : EIC Ion 473.00 (472.70 to 473.70): THC-C3.D\data.ms

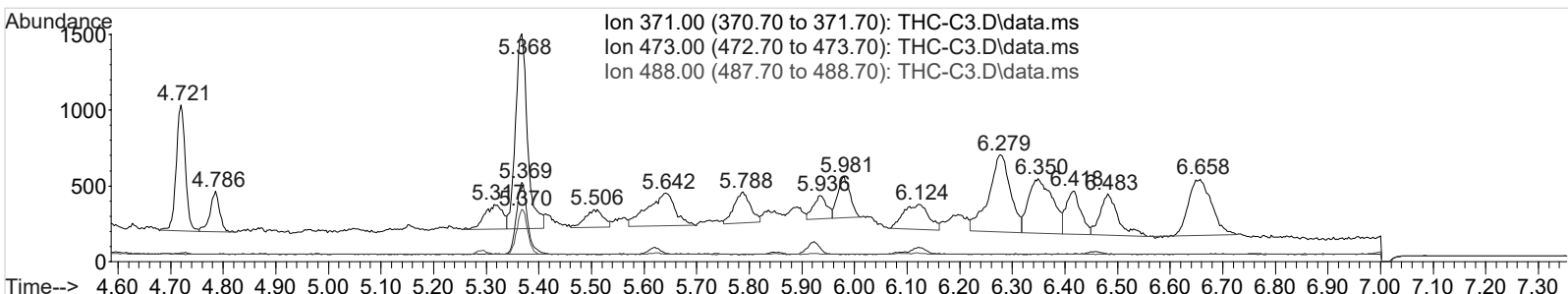
peak #	R.T. min	first scan	max scan	last scan	PK TY	peak height	corr. area	corr. % max.	% of total
1	5.369	261	273	297	BB	470	6965	100.00%	100.000%

Sum of corrected areas: 6965  
 Signal : EIC Ion 488.00 (487.70 to 488.70): THC-C3.D\data.ms

peak #	R.T. min	first scan	max scan	last scan	PK TY	peak height	corr. area	corr. % max.	% of total
1	5.370	262	273	287	BB	293	4160	100.00%	100.000%

Sum of corrected areas: 4160

TOX.M Fri Feb 02 07:13:09 2018



# AM #3 Urine Carboxy-THC QC Calculations

CS

Run Date: 2/1/2018

Case Calculations:

Lab Case #: BRC3 Lot 68440

<i>EIC Ion 371 Corr. Area:</i>	20348	
<i>EIC Ion 473 Corr. Area:</i>	6965	473:371 Ratio: <span style="background-color: #cccccc; padding: 2px; text-align: center;">0.342</span>
<i>EIC Ion 488 Corr. Area:</i>	4160	488:371 Ratio: <span style="background-color: #cccccc; padding: 2px; text-align: center;">0.204</span>

Quality Control Calculations:

Retention Time acceptable range: 5.269 to 5.466

	<i>1st ctrl</i>	<i>2nd ctrl</i>
<i>EIC Ion 371 Corr. Area:</i>	16521	25815
<i>EIC Ion 473 Corr. Area:</i>	5391	8789
<i>EIC Ion 488 Corr. Area:</i>	3507	5654

*Approximate minimum corrected area of 371 ion: ~* 3304

*Ratio of 473:371*

<i>1st ctrl</i>	<b><u>0.326</u></b>	<i>2nd ctrl</i>	<b><u>0.340</u></b>	<i>avg.</i>	<b>0.333</b>
<i>Accepted Range</i> (+/- 20%)		<b><u>0.267 - 0.400</u></b>			

*Ratio of 488:371*

<i>1st ctrl</i>	<b><u>0.212</u></b>	<i>2nd ctrl</i>	<b><u>0.219</u></b>	<i>avg</i>	<b>0.216</b>
<i>Accepted Range</i> (+/- 20%):		<b><u>0.173 - 0.259</u></b>			

Carboxy-calculation sheet  
Revision 0 effective date 10/23/13  
Issuing authority: Quality Manager